

TWT-C2R-V2 Simple 4ch DI, 2ch DO Digital I/O Control Module

Ver. 1.2

- ✓ Simple Digital I/O Control Board
- ✓ Provide Relay Interface to control higher current electronic switch
- ✓ Provide 2000rms Optically Isolated protection
- ✓ Compatible with RS-232 DB9 Signal Pin Assignment to conduct Digital I/O control via RS-232 Modem
- ✓ LED indicates Digital I/O Status



Specifications

Digital Output

- ▶ Quantity : 2
- ▶ Signal Type : Relay (N.O./ N.C./ COM)
- ▶ Contact capacity : 120V@10A/ 24V@10A
- ▶ Initial Status : N.O.(High)
- ▶ Connector : 5.08mm Terminal block

DIO Control

- ▶ Quantity : 6 (4DI + 2DO)
- ▶ Signal : 3.5~5V GPIO
- ▶ Connector : DB9 Female

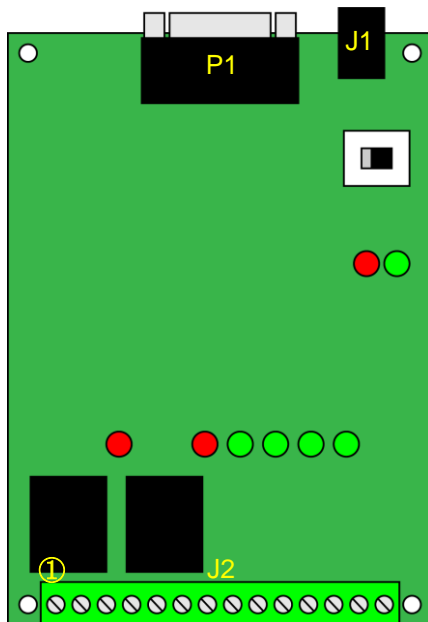
Digital Input

- ▶ Quantity : 4
- ▶ Input Voltage range : 5~24VDC
- ▶ Protection : 2000Vrms Optically Isolated
- ▶ Initial Status : Digital High
- ▶ Switch: 5V/12V Pull-High Setup
- ▶ Connector : 5.08mm Terminal block

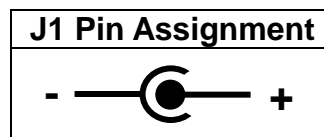
Others

- ▶ Working Voltage : 12V DC
- ▶ Size : 84 x 122 mm

Pin Assignment:



P1 Pin Assignment	
Pin 01	ISO 0
Pin 02	X
Pin 03	X
Pin 04	Relay 1
Pin 05	GND
Pin 06	ISO 1
Pin 07	Relay 2
Pin 08	ISO 2
Pin 09	ISO 3



J2 Pin Assignment		P1 Mapping
01	COM 1	Relay 1
02	N.O. 1	
03	N.C. 1	
04	COM 2	Relay 2
05	N.O. 2	
06	N.C. 2	
07	DI 00	ISO 0
08	DI 01	ISO 1
09	DI 02	ISO 2
10	DI 03	ISO 3
11	GND	X
12	GND	X
13	+ 5V	X
14	+ 12V	X