

EBox-CGate-PMS-01 Intelligent Power Management Server

- ✓ Save energy with intelligent power management
- ✓ 8 independent standard power receptacles
- ✓ Human machine interface for field real time monitoring
- ✓ Web dynamic monitoring management function and interface of easy operating and setup
- ✓ Use database architecture for information management and transportation
- ✓ 1 set of standard 10/100Mbps TCP/IP network communication interface
- ✓ 2 sets of expandable temperature and humidity measurement modules
- ✓ High performance and low power consumption 400Mhz ARM9 32-bit RISC core



Product features

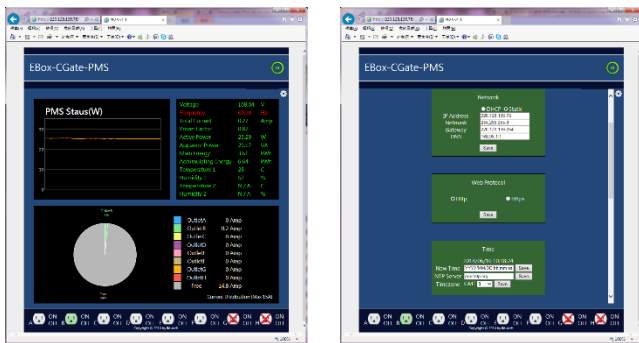
☒ Simple and easy use

When you use EBox-CGate-PMS-01, it is like putting the power plug of common electric equipment into a power outlet on the wall. Without extra wiring, you can achieve intelligent power management.



☒ Integrate electric meter management function

EBox-CGate-PMS-01 can provide power usage information regarding current, voltage and total power consumption for the loaded equipment as the basic data required for the manager to conduct energy saving plan or power management.



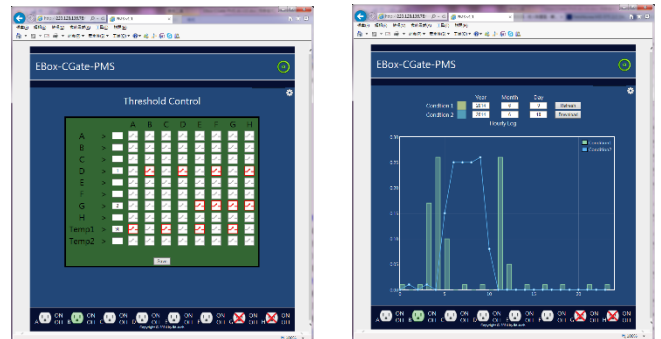
☒ Multifunctional and human machine interface of simple and easy operation

Besides real time information query and receptacle power management via buttons and display, EBox-CGate-PMS-01 also provides complete dynamic Web monitoring function, allowing the manager to easily achieve equipment power management no matter when and how.



☒ Record complete operating status with database architecture

EBox-CGate-PMS-01 records the power usage status for each receptacle into built-in database. Besides scheduled recording, it will also record various kinds of alarm status set by the user. Besides using Web for real time query, the user can use standard access to database via internet to run back-end data analysis and treatment.



☒ Advanced alarm function

EBox-CGate-PMS-01 provides alarm function for current overload. Besides cutting off power supply for protection, it will cut off the power switch for the same system/loop as the overloaded equipment and provide Email remote proactive alarm function to remind the system manager.

☒ Industrial mechanistic design and certification

The design includes metal casing and installation in standard 19-inch cabinet. With CE/FCC and UL certification, it is reliable for the user to install and use it.

Exterior



Reference specifications

Hardware

Working power

- ▶ Number of input : 1
- ▶ Receptacle type : main body : IEC320 C20 receptacle
Wiring : 3 m IEC320 C19 to NEMA 5-15P
- ▶ Working voltage : 90V~260 VAC
- ▶ Frequency : 50/60Hz full range
- ▶ Max output current : 15 Amp
- ▶ Protection : 15 Amp resettable circuit breaker

Power management interface

- ▶ Number of output : 8
- ▶ Receptacle type : NEMA 5-15/20R
- ▶ Voltage range : +/- 2% @ 90V~260V
- ▶ Active Power : +/- 2% @ 50W~5000W
- ▶ Frequency : +/- 2% @ 45~65Hz
- ▶ Power Factor : +/- 0.02 @ 0.5~1.0
- ▶ kWh range : 0.001kWh ~ 99999.999kWh
- ▶ Current range : 0~15 Amp
- ▶ Current resolution : 0.1Amp

System core

- ▶ CPU : ATMEL AT9G20 400MHz ARM9
- ▶ Memory : 64MB SDRAM, 128MB NAND FLASH

Application

Network communication protocol

- ▶ IPv4, HTTP, SMTP, SSL, ICMP, ARP, DHCP, NTP, TCP, UDP, FTP

Set management interface

- ▶ Web Console
- ▶ SQL DB direct setup

Purchase information

EBox-CGate-PMS-01 Intelligent power management server

Content – one EBox-CGate-PMS-01, one 3-meter IEC320 C19 to NEMA 5-15P cable, two pieces of L-shape fastener

LLD-TH-01 - EBox-CGate-PMS-01 temperature and humidity expansion module (including transmission wire)

Network interface

- ▶ Quantity : 1
- ▶ Type : 10/100 Base T Ethernet
- ▶ Connector : RJ45

Human machine operating interface

- ▶ LED : power management output on/off status, loop status, SSL and Ethernet setting status
- ▶ Seven-stage display : power management output receptacle number, power measurement value and network setting
- ▶ Function key : switch 7-stage display content
- ▶ Beeper : prompt for 7-stage display content

Temperature humidity expansion interface

- ▶ Quantity : 2
- ▶ Connector : RJ11

Others

- ▶ Dimensions : 215 x 432 x 44.45 mm (1U)
- ▶ Applicable temperature : 0~40°C
- ▶ Applicable humidity : 0%~90% RHG
- ▶ Safety certification : CE, EN 55022 Class A, EN 55024, EN 61000-3-2, EN 61000-3-3, EN60950-1 FCC Part 15 Class A, ICES-003

Intelligent power management

- ▶ Remote power switch Web Console, SQL DB direct setup
- ▶ Current overload treatment : turn off power, send alarm
- ▶ Current overload alarm range : 0~15.0Amp
- ▶ Current overload alarm message delivery : Email, Data Log